

# GALAXY FLYTE



Wireless Made Simple  
Make Your XLR Mic Cable-Free or  
Transmit to Active Speaker or a Mixer

## USER'S MANUAL



DIGITAL  
UHF



AMPLIFY YOUR PASSION.

# Contents

Introduction.....	1
DTV Frequency Ranges & FCC Consumer Alert & Safety.....	2
Quick Start.....	3
Basic Operation.....	4
Specifications.....	5
Parts and Accessories.....	5
Wireless Tips Troubleshooting.....	6
Troubleshooting.....	6

## Introduction

Thank you for choosing a Galaxy Audio professional wireless in-ear monitor system. You have joined the ranks of countless satisfied customers. Our years of professional experience in design and manufacturing ensure our products' quality, performance and reliability.

### 1. Introduction

1. Durable, ergonomic lightweight plastic body Receiver.
2. Multiple Selectable UHF frequencies.
3. Auto Sync Frequency Receiver to Transmitter
4. Designed to provide incredible audio quality and reliable performance for artists, broadcasters and other demanding audio environments.

### 2. Receiver Installation and Connections

#### Installation

1. For better operation the transmitter should be at least 3ft. (1m) above the ground and at least 3ft. away from a wall or metal surface to minimize reflections.
2. Keep away from noise sources such as computer, digital equipment, motors, automobiles and neon lights, as well as away from large metal objects.
3. Keep open space between the receiver and transmitter for better reception.
4. The transmitter should be at least 6ft. (2m) from the receiver.

#### Connections:

1. Power to the unit is controlled by the push button on the side of each nit.
2. The GF-200T transmitter has an XLR female connection and comes with an XLR to 1/4" adapter.
3. The GF-200R receiver has an XLR male connection and comes with an XLR to 1/4" adapter.

# DTV Frequency Ranges & FCC Consumer Alert

DTV RF Channel	Frequency Range
14	470-476
15	476-482
16	482-488
17	488-494
18	494-500
19	500-506
20	506-512
21	512-518
22	518-524
23	524-530
24	530-536
25	536-542
26	542-548
27	548-554
28	554-560
29	560-566
30	566-572
31	572-578
32	578-584
33	584-590
34	590-596
35	596-602
36	602-608
37	608-614
38	614-620
39	620-626
40	626-632
41	632-638
42	638-644
43	644-650
44	650-656
45	656-662
46	662-668
47	668-674
48	674-680
49	680-686
50	686-692
51	692-698

The frequencies of the Galaxy UHF Wireless Systems are on frequencies that are used by Digital Television stations.

To be assured of the best performance, you should determine on what RF channels the DTV stations in your area are broadcasting, then set your wireless systems on frequencies that are not being used.

You can find that information on this FCC web site. <http://transition.fcc.gov/mb/engineering/dtvmaps/>

Enter the zip code of the location where the wireless system will be used into the location search bar. A list of stations in that area will be listed. Click on the call sign of the stations and the details will appear, showing you the RF channel the TV station is using. Compare these with the chart to the left, and, using the Galaxy frequency charts online, find a frequency that is not on an active DTV RF channel.

For example, if you have an B-Band CSL and your location has DTV stations on RF channels 31 and 33, you will want to set your CSL on a frequency that is on RF channels 32 or 34.

## ! IMPORTANT SAFETY INSTRUCTIONS !

1. READ these instructions.
2. KEEP these instructions.
3. HEED all warnings.
4. FOLLOW all instructions.
5. DO NOT use this apparatus near water.
6. CLEAN ONLY with dry cloth.
7. DO NOT block any ventilation openings. Install in accordance with the manufactures instructions.
8. DO NOT install near any heat sources such as radiators, heat registers, stoves, or other apparatus (including amplifiers) that produce heat.
9. DO NOT defeat the safety purpose of the polarized or grounding-type plug. A polarized plug has two blades with one wider than the other. A grounding type plug has two blades and a third grounding prong. The wider blade or the third prong are provided for your safety. If the provided plug does not fit into your outlet, consult an electrician for replacement of the obsolete outlet.
10. PROTECT the power cord from being walked on or pinched, particularly at plugs, convenience receptacles, and the point where they exit from the apparatus.
11. ONLY USE attachments/accessories specified by the manufacturer.
12. UNPLUG this apparatus during lightning storms or when unused for long periods of time.
13. REFER all servicing to qualified service personnel. Servicing is required when the apparatus has been damaged in any way, such as power-supply cord or plug is damaged, liquid has been spilled or objects have fallen into the apparatus, the apparatus has been exposed to rain or moisture, does not operate normally, or has been dropped.
14. DO NOT expose the apparatus to dripping and splashing. DO NOT put objects filled with liquids, such as vases, on the apparatus.
15. Remove the batteries from the receiver if the system will not be used for a long period of time. This will avoid any damage resulting from a defective leaking battery.
16. DO NOT throw used batteries into a fire. Be sure to dispose of or recycle used batteries in accordance with local waste disposal laws.

## LICENSING INFORMATION

### THIS RADIO EQUIPMENT IS INTENDED FOR USE IN PROFESSIONAL ENTERTAINMENT AND SIMILAR APPLICATIONS.

Changes or modifications not expressly approved by Galaxy Audio Incorporated could void your authority to operate the equipment. Licensing of Galaxy Audio wireless microphone equipment is the user's responsibility, and licensability depends on the user's classification and application, and on the selected frequency. Galaxy Audio strongly urges the user to contact the appropriate telecommunications authority concerning proper licensing, and before choosing and ordering frequencies.

**NOTE: THIS EQUIPMENT MAY BE CAPABLE OF OPERATING ON SOME FREQUENCIES NOT AUTHORIZED IN YOUR REGION. PLEASE CONTACT YOUR NATIONAL AUTHORITY TO OBTAIN INFORMATION ON AUTHORIZED FREQUENCIES FOR WIRELESS MICROPHONE PRODUCTS IN YOUR REGION**

**Licensing:** Note that a ministerial license to operate this equipment may be required in certain areas. Consult your national authority for possible requirements.

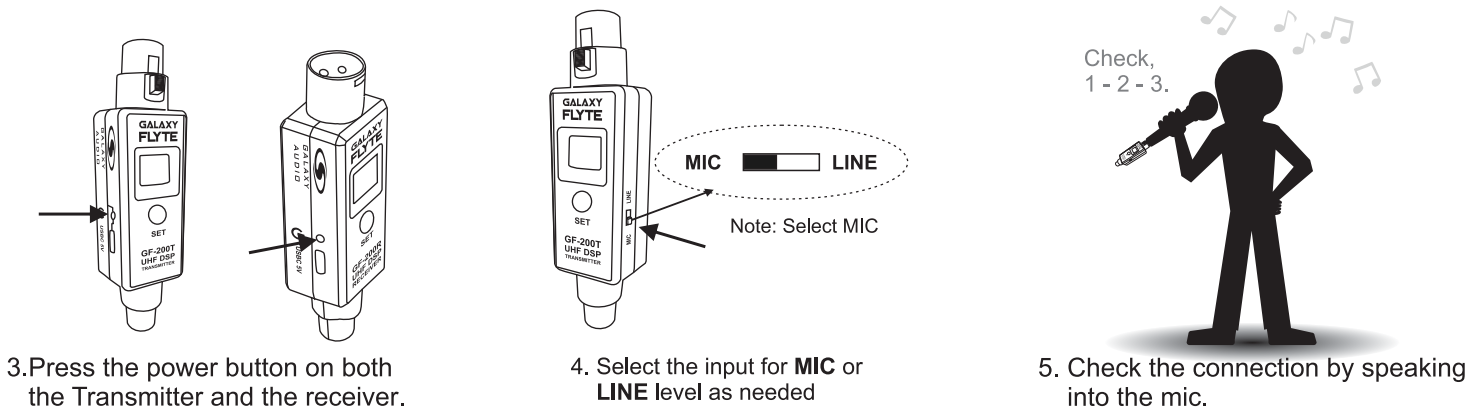
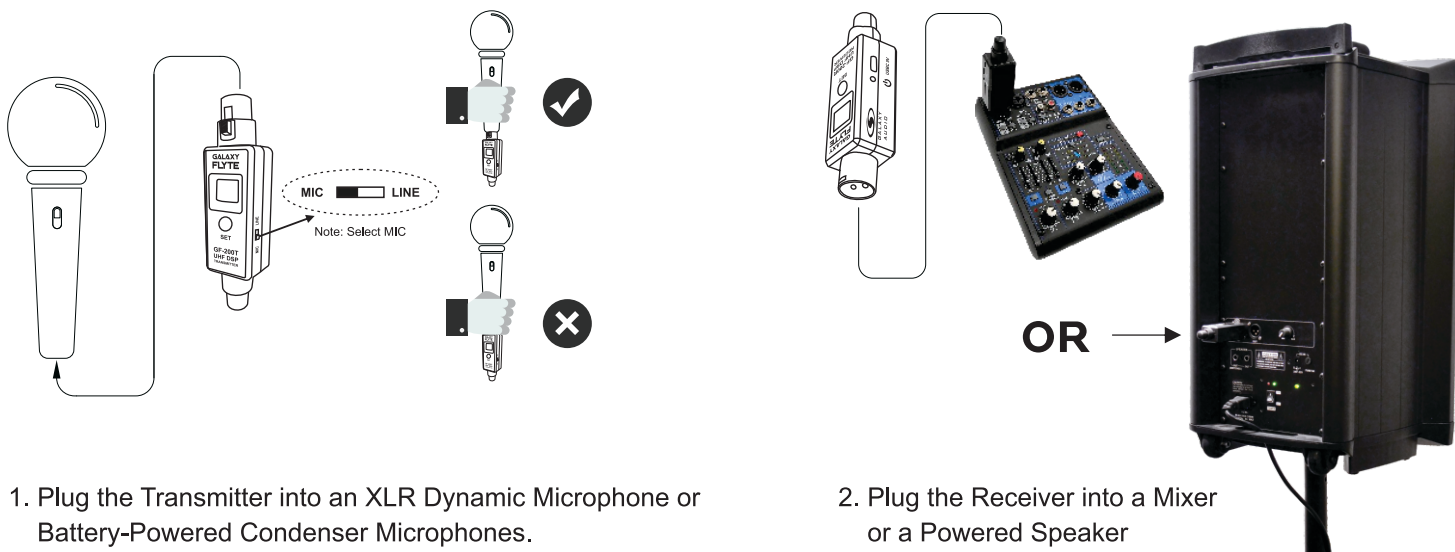
### FCC Consumer Alert for Wireless Microphones (U.S.)

Most users do not need a license to operate this wireless microphone system. Nevertheless, operating this microphone system without a license is subject to certain restrictions: the system may not cause harmful interference; it must operate at a low power level (not in excess of 50 milliwatts); and it has no protection from interference received from any other device. Purchasers should also be aware that the FCC is currently evaluating use of wireless microphone systems, and these rules are subject to change.

For more information, call the FCC at 1-888-CALL-FCC (TTY: 1-888-TELL-FCC) or visit the FCC's wireless microphone website at [www.fcc.gov/cgb/wirelessmicrophones](http://www.fcc.gov/cgb/wirelessmicrophones)

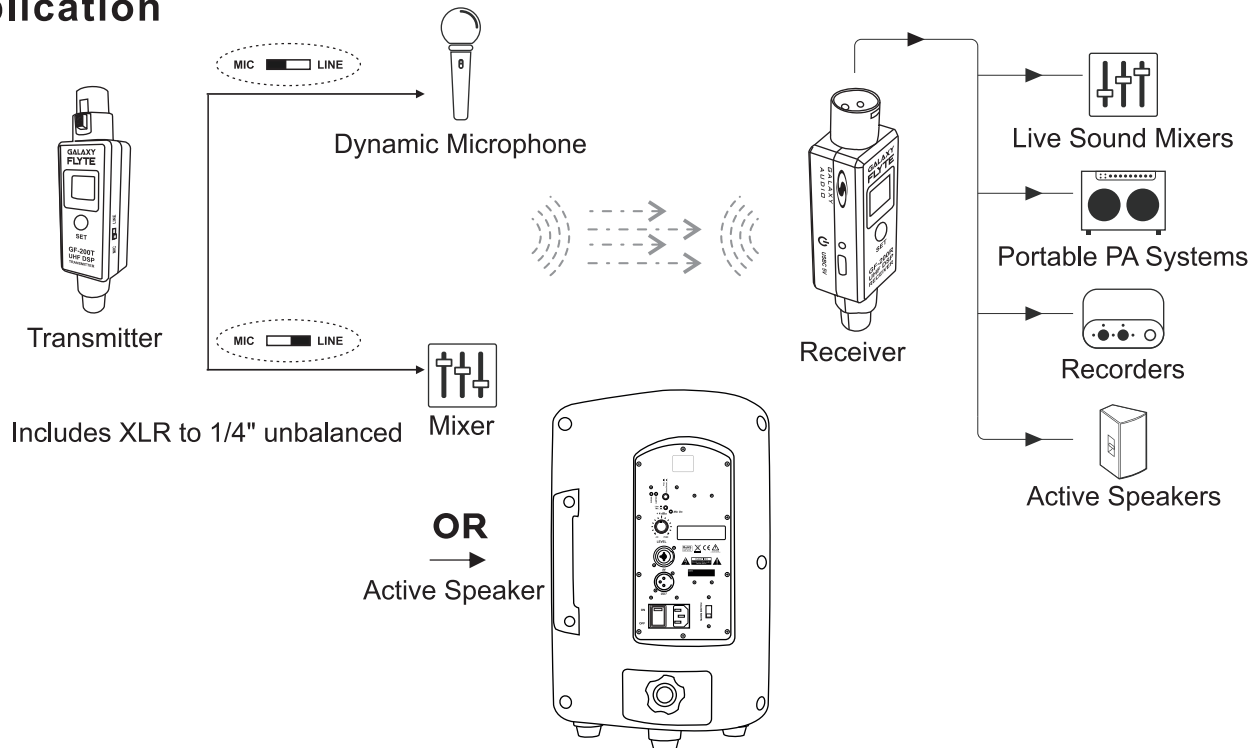
Please visit [galaxyaudio.com](http://galaxyaudio.com) for the latest updates

# Quick Start



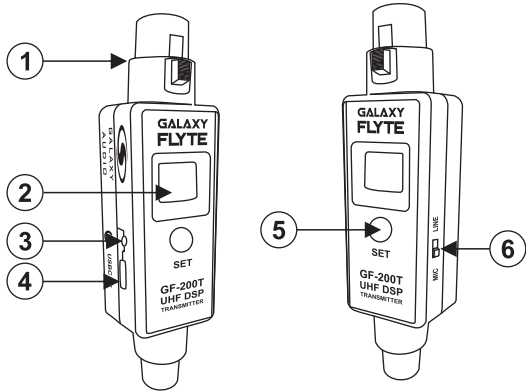
Check both displays to see if both are on the same frequency.

## Application



# Basic Operation

## BASIC OPERATION TRANSMITTER



### 1. Transmitter:

- ① XLR Plug
- ② OLED Display
- ③ Power Button
- ④ USBC 5V Recharge Socket
- ⑤ Function Setting
- ⑥ Microphone / Line Level Switch

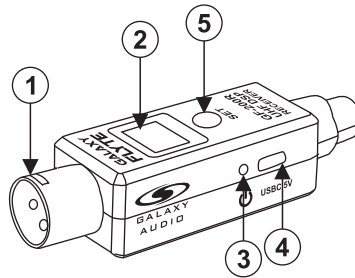
**Power button:** Press and hold for 2 seconds to turn on or turn off the unit.

**Set button:** In stand-by mode, press and hold for 2 seconds, start pairing with receiver unit, press once, change to next working channel.

## BASIC OPERATION RECEIVER

### 2. Receiver:

- ① XLR Plug
- ② OLED Display
- ③ Power Button
- ④ USBC 5V Recharge Socket
- ⑤ Function Setting



**Power button:** Press and hold for 2seconds,to turn on or turn off the unit.

**Set button:** In stand-by mode, press and hold for 2 seconds, start pairing with the transmitter unit.

### 3. Pairing:

On both the transmitter and receiver unit, press and hold the **SET** button for 2 seconds, the OLED display will show: **PAIRING**. The Transmitter will display the paring action for 30 seconds,

The user can pair more receiver units if needed. Or quit the pairing action by pressing the **SET** button once more.

If pairing is successful, the receiver will display: **PAIRING FINISH**

# Specifications

## **GALAXY FLYTE System:**

**Band:** UHF

**Frequency Band Options:**

**CODE A** 500–523 MHz, **CODE B** 524–547 MHz, **CODE C** 548–571 MHz

**Transmission:** Mono

**Operating Range:** Under Typical Conditions 100' (30m)

Note: actual range depends on RF signal absorption, reflection, interference, and battery characteristics.

**Operating Temperature Range:** 0°F to 134°F

(-18° C to +57° C) Note: battery characteristics may limit this range

**High Resolution 24-bit / 48kbps Audio**

**Channels:** 20

**Frequency Response:** 20Hz - 20KHz (Dependent on mic type or input signal).

**Dynamic Range:** 110 dB

**Sensitivity:** -88 dBm

**T.H.D.** 0.2%

**RF Output Power:** 10mW

**Battery Life:** About 5 Hours

**Latency:** Less than 3ms

## **GF-200T Transmitter: XLRF**

**LCD Display:** Frequency, Battery Life

**Input Gain:** 2 Position Line to Mic

**Power Supplied By:** 3.7V 1000mA Lith-Ion internal battery

**Battery Life:** About 5 Hrs. dependent on power setting

**Dimensions:** 1.21" x 0.95" x 4.46" (30.7 x 24 x 113.3 mm) LWH

**Weight:** 2.12 oz (60g)

## **GF-200R Receiver: XLRM**

**LCD Display:** Frequency, Battery Life, RF Power

**Power Supplied By:** 3.7V 1000mA Lith-Ion internal battery

**Battery Life:** About 5 Hrs. dependent on power setting

**Dimensions:** 1.21" x 0.95" x 4.1" (30.7 x 24 x 104 mm) LWH

**Weight:** 1.84 oz (52g)

**GALAXY AUDIO**  
Frequency Page




Please scan the QR  
link for the most current  
frequency information.



<https://www.galaxyaudio.com/support/schematics-and-frequency-charts>

## Parts and Accessories

Many of these parts and accessories may be found and purchased from the Galaxy Audio website in the Galaxy Store ([www.galaxyaudio.com/parts-and-accessories](http://www.galaxyaudio.com/parts-and-accessories)).

	Additional GF-200R Receivers
	3-Pole XLRM Male to Mono 1/4" Male Adapter
	3-Pole XLRF Female to Mono 1/4" Femal Adapter

# Wireless Tips & Troubleshooting

## Tips for Improving System Performance

- Maintain a line of sight between transmitter and receiver.
- Do not have walls, metal objects, large crowds, etc. blocking the line of sight between the transmitter and receiver.
- Avoid placing the receiver near metal surfaces or any digital equipment (CD players, computers, etc).
- Keep the receiver over 3' (1 m) above the floor/ground .
- Digital TV stations and other RF transmitters can interfere with the transmitting frequencies, insure you are using a clear frequency.
- Keep the distance between transmitters and receivers as short as possible.
- Find out what TV stations are broadcasting in your area and avoid the frequencies they are on.
- TV station information is available from many sources on line, such as <https://www.fcc.gov/media/engineering/dtvmaps>.
- If your receiver is showing that it is receiving RF when your transmitter/s are turned off, you need to change to another frequency.
- If you are using several systems, you can contact [service@galaxyaudio.com](mailto:service@galaxyaudio.com) for assistance in frequency coordination.
- Make certain the transmitter and receiver are fully charged before use. Both can be operated while charging.



Scan for most current wireless tips

## Troubleshooting

Issue	Solution
No sound/No RF receive signal.	Transmitter or Receiver is OFF.
	Check that the microphone is turned on and receiving signal from the transmitter.
	Check that the power switch is turned on for both the transmitter and the receiver.
	Ensure that the transmitter and receiver are on the same channel.
	The receiver can be paired with one transmitter at a time. However multiple receivers can be paired to one transmitter.
Distortion or faint sound	Adjust the gain mode to "LINE or MIC"
	Adjust the output signal from the transmitting device.
Signal instability: RF flickering or off completely	See, Wireless Tips above
Unable to switch the channel	The channel switch locks after 15 seconds. Double-click the channel button to unlock and reset
Distortion, or unwanted noise bursts.	One transmitter can connect to multiple receivers.



### CLEANING

Unplug this unit from the power source before cleaning. Do not use liquid cleaners or aerosol cleaners. Use a damp cloth for cleaning.



**AMPLIFY YOUR PASSION™**



[www.galaxyaudio.com](http://www.galaxyaudio.com)

## ***THREE YEAR LIMITED WARRANTY***

**WARRANTY** Information can be viewed online at  
<https://www.galaxyaudio.com/support/warranty>



[www.galaxyaudio.com/support/warranty](http://www.galaxyaudio.com/support/warranty)

# **GALAXY FLYTE**

## **USER'S MANUAL**

Specifications in this manual are subject to change without notice.  
For the most up to date manual and information  
visit [www.galaxyaudio.com](http://www.galaxyaudio.com).

1-800-369-7768    [www.galaxyaudio.com](http://www.galaxyaudio.com)

© Copyright Galaxy Audio 2026