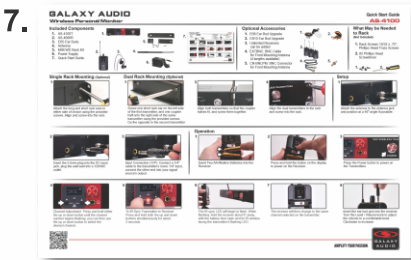
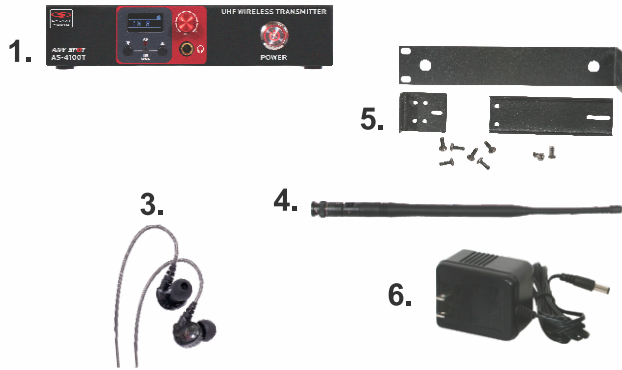


Included Components

1. AS-4100T
2. AS-4000R
3. EB5 Ear Buds
4. Antenna
5. MREWD Rack Kit
6. Power Supply
7. Quick Start Guide



Optional Accessories

1. EB6 Ear Bud Upgrade
2. EB10 Ear Bud Upgrade
3. Unlimited Receivers can be added
4. EXTBNC: BNC Cable for Front Remote Mounting Antenna (4 lengths available)
5. CN-BNCPM: BNC Connector for Front Mounting Antenna

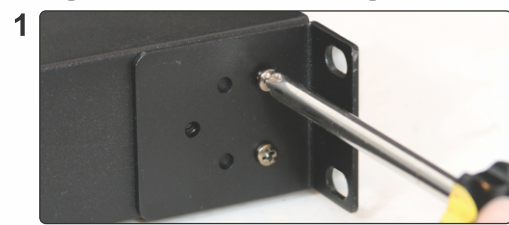


What May be Needed to Rack (Not Included)

1. Rack Screws 10/32 x .75", Phillips Head Truss Screws
2. #2 Phillips Head Screwdriver



Single Rack Mounting (Optional)



Attach the long and short rack ears to either side of choice using the provided screws. Align and screw into the rack.

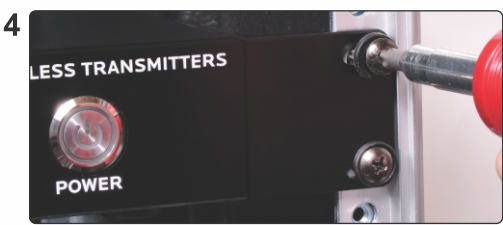
Dual Rack Mounting (Optional)



Screw one short rack ear on the left side of the first transmitter, and one coupler half onto the right side of the same transmitter using the provided screws. Do the opposite to the second transmitter



Align both transmitters so that the coupler halves fit, and screw them together.



Align the dual transmitters to the rack and screw into the rack.

Setup



Attach the antenna to the antenna jack and position at a 45° angle if possible.



Insert the 5.5mm plug into the DC input jack, plug the wall wart into a 120VAC outlet.



Input Connection (1/4"): Connect a 1/4" cable to the transmitter's mono 1/4" input, connect the other end into your signal source's output.

Operation



Insert Two (AA) Alkaline Batteries into the Receiver.



Press and hold the button on the display to power on the Receiver.



Press the Power button to power on the Transmitter.



Channel Adjustment. Press and hold either the up or down button until the channel number begins flashing, you can then use the up or down button to select the desired channel.



To IR Sync Transmitter to Receiver Press and hold both the up and down buttons simultaneously for about 3 seconds.



The IR sync LED will begin to flash. While flashing, hold the receiver about 6" away, with the battery door open and its IR window facing the transmitter's flashing LED.



The receiver will then change to the same channel selected on the transmitter.



Insert the ear bud jack into the receiver. Turn the Level / Volume knob to adjust the volume to a comfortable level. Clockwise to increase level.



AS-4100

Wireless Personal Monitor



Quick Start Guide

FAQ

1. Q. How many receivers can I use?

A. It is unlimited. Use as many as you need.

2. Q. Can I use headphones other than the supplied EB5?

A. Yes, you can use any headphone or earbud with an impedance of 16 ohms or higher.

3. Q. Why am I getting interference?

A. You may be on a frequency used by a digital TV station. Try stepping through channels until you find one that is clear.

4. Q. How do I know what the frequencies are?

A. Please use the QR code to go to the product page that will have the most current information.



AMPLIFY YOUR PASSION™

BE HEARD™

Other Helpful Sources

AS-4100
Product Page



AS-4100
Manual



(PDF Download)

AS-4100
Cutsheet



(PDF Download)

AS-4100
Video



Wireless Tips

Maintain line of sight between the transmitter and receiver antennas.

Do not have walls, metal objects, large crowds, etc. blocking the line of sight between the transmitter and receiver.

Antennas on the stationary equipment should be kept several feet above the ground.

Antennas can be mounted on stands or walls using brackets such as the ANT-LB.

On body pack receivers/transmitters, avoid putting them in your pocket, and/or folding the antenna under the pack. The antenna should hang freely and openly.

Keep the distance between transmitters and receivers as short as possible.

If distances above 20-30' are unavoidable, directional antennas such as the ANT-PDL can improve reception by rejecting signals outside their pickup angle.

Find out what TV stations are broadcasting in your area and avoid the channels they are on.

This information is available from many sources on line, such as www.tvfool.com.

If your receiver is showing that it is receiving RF when your transmitter is turned off, you need to move to another frequency.

If you are using several systems, you can contact service@galaxyaudio.com for assistance in frequency coordination.

Make certain you are using fresh batteries, rechargeable batteries may be used, but they discharge at a much faster rate than alkaline.

Specifications subject to change without notice.

601 E. Pawnee Wichita, KS 67211 316. 263.2852 FAX 316.263.0642 www.galaxyaudio.com

Printed in China
V20250128